

PAY & GO PRICE LIST 2011

Metropolitan Works, part of London Metropolitan University, is a hub of creativity located in the design and arts district of east London. The Centre's Pay & Go workspaces provide creative businesses and designer-makers with untutored access to high-spec services and facilities as and when needed.

PAY & GO WOOD WORKSHOP

The Centre's impressive wood workshop contains a range of traditional machinery including: thicknesser, lathe, morticer, table saw, dimension saw, band saw, pillar drill, radial arm saw, surface planer, spindle moulder, bobbin sander, disk sander and belt sander.

> Wood workshop access with bench
£48 PER DAY (£40 FOR LONDON-BASED BUSINESSES)

> Workshop access with lockable assembly room
Long-term rates can be negotiated. Metropolitan Works tenants benefit from support from expert technicians and business advisory services.

PAY & GO CAD OFFICES

Pay & Go Computer Aided Design (CAD) desks come complete with commercially licensed Rhino and SolidWorks CAD software as well as a choice of peripheral equipment including a haptic device, A4 Scanner and a Wacom tablet.

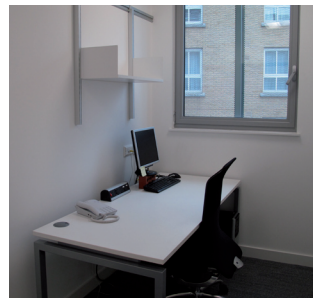
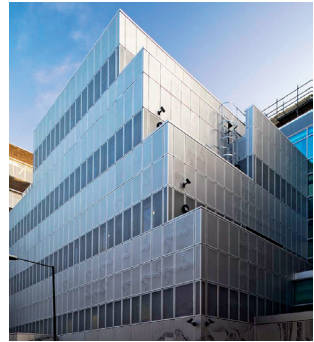
> CAD desk
£48 PER DAY (£40 FOR LONDON-BASED BUSINESSES)

> CAD office
Long-term rates can be negotiated. CAD office tenants get access to all of the above software and technology along with access to expert technicians and the business advisory services as offered by Metropolitan Works.

MEETING ROOM HIRE

Metropolitan Works' meeting room is now available for hire. The room is ideal for client or pitch meetings and features a state of the art projector, adjustable furniture lay-outs and can seat up to 15 people. Catering can be arranged if needed.

> Meeting room
£100 - HALF-DAY £160 - FULL-DAY



41 Commercial Road
(Weyhill Road entrance)
London E1 1LA
info@metropolitanworks.org
www.metropolitanworks.org